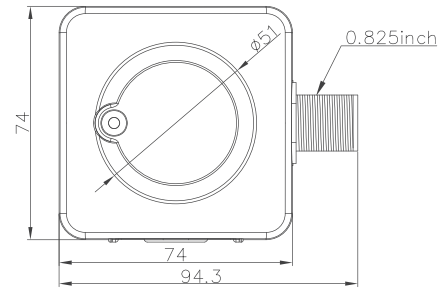
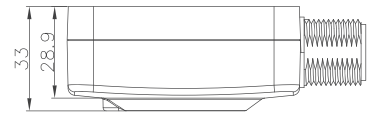
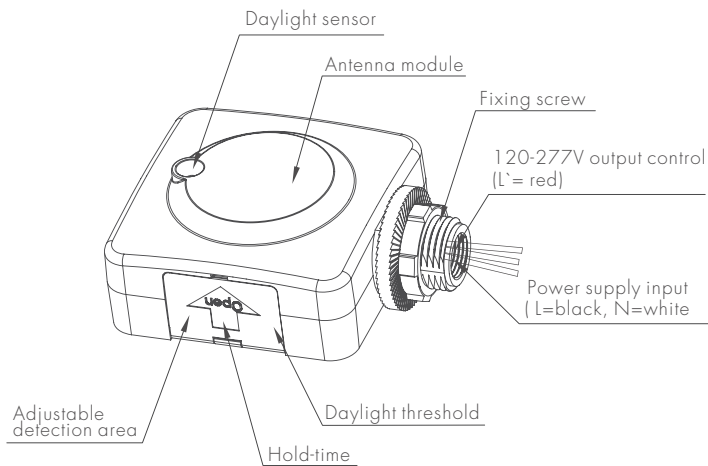


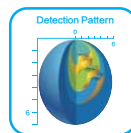
# Reinforced Attachable Version On/off Control

Model: HC430S/R

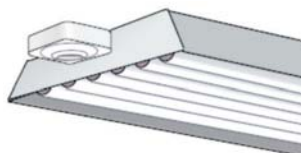


Model: HC430S/R

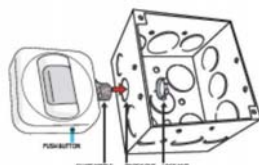
Mechanical structure (mm)



This sensor is for the external installation. To attach to the outside of fixture, where aluminium louvre is usually applied. (alum. louvre blocks and interferes microwave detection.)



Attach to metal fixture



Attach to junction box

An optional external metal conduit is available to be added on the plastic conduit to increase the length, in case the conduit is not long enough to go through the metal wall, where this is a thick recessed area for IP 65 protection.

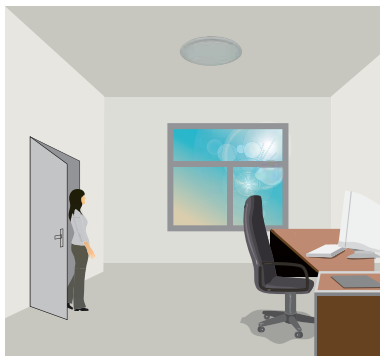
Double insulation cable is also available for easy retrofit.



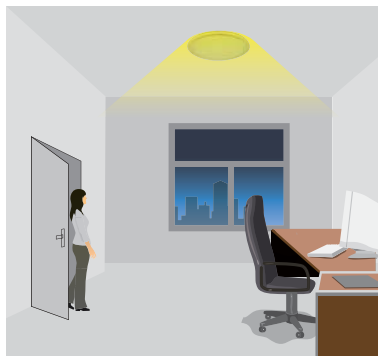
## Function and Options

### 1 On/off Function

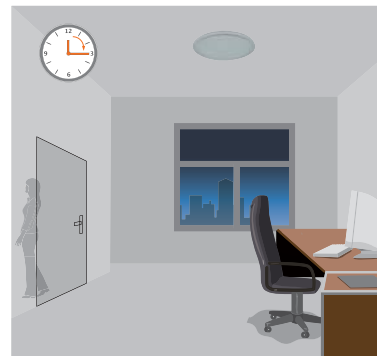
This sensor is a motion detection switch. Fixture turns on when sensor detects motion and turns off with no motion, following the pre-selected hold-time (5s-30min). The built-in daylight sensor compares available luminance to pre-set threshold level. Fixture stays off with sufficient natural light.



With sufficient natural light, the light does not switch on when presence detected.



With insufficient natural light, the sensor switches on the light automatically when person enters the room.



After the hold time, then switches off automatically when no movement is detected.

### 2 100H burn-in mode for fluorescent lamp

With simple operation, rapidly turn off/on the fixture 3 cycles within 3 sec. (the green LED on the sensor flashes and the fixture blinks 3 times to indicate the success of setup), lamp will be 100% on for 100 hours, and then automatically goes to sensor mode after 100 hours. This is crucial to secure the lifetime of fluorescent lamp, when new fixture is installed, or old lamp is replaced.

*This 100H burn-in feature can be cancelled by turning off/on the fixture 1 cycle within 1 sec.*

### 3 Ambient daylight threshold

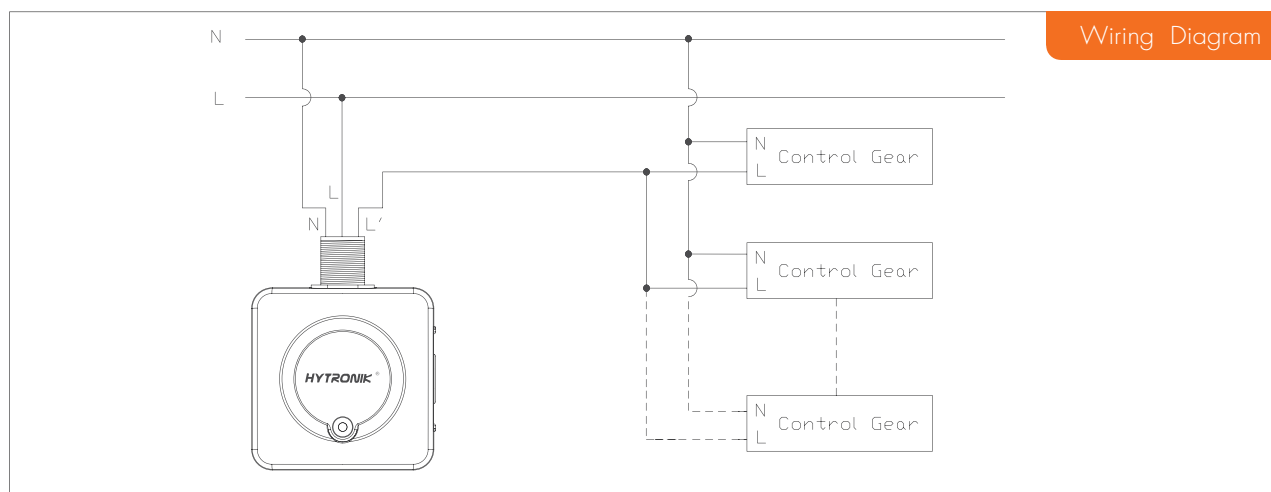
With simple operation, rapidly turn off/on the fixture 2 cycles within 2 sec:

1. The green LED on the sensor flashes slowly for 5 seconds, meanwhile the fixture blinks twice.
2. The photodiode measures and remembers the surrounding lux for 1 sec.
3. The fixture and green LED will be on for 10s to indicate successful learning.

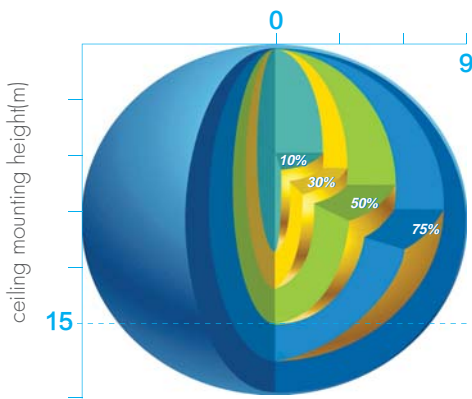
This feature enables the fixture to sample luminance at any time to set lux threshold level.

The latest surrounding lux value overwrites previous lux value learned.

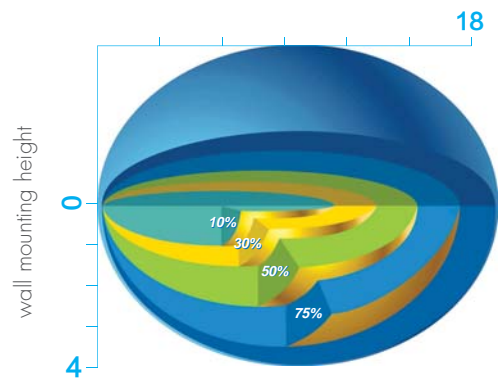
Both the settings on DIP switch and the learned ambient lux threshold can overwrite each other. The latest action controls.



## Detection Pattern



Ceiling mounted detection pattern



Wall mounted detection pattern

## Settings

### 1 Detection area

Detection area can be reduced by selecting the combination on the DIP switches to fit precisely for each specific application.

	1	2	3	
I	●	●	●	100%
II	○	●	●	75%
III	●	○	●	50%
IV	●	●	○	25%
V	○	○	○	10%

- I – 100%
- II – 75%
- III – 50%
- IV – 25%
- V – 10%

### 2 Hold-time

Hold-time means the time period to keep the lamp on 100%, after all motion has ceased (detection area vacated).

	1	2	3	
I	●	●	●	5s
II	○	●	●	30s
III	●	○	●	1min
IV	●	●	○	5min
V	●	○	○	10 min
VI	○	○	○	30 min

- I – 5s
- II – 30s
- III – 1min
- IV – 5min
- V – 10 min
- VI – 30 min

### 3 Daylight sensor

The daylight threshold can be set on DIP switches, to fit for particular application.

- “Daylight” : The lamp works always, even during daylight.
- “Twilight” : The lamp works only in twilight and in darkness.
- “Darkness” : The lamp works only in darkness.

	1	2	3	
I	●	●	●	2 Lux
II	○	●	●	10 Lux
III	●	○	●	30 Lux
IV	●	●	○	50 Lux
V	○	○	○	Disable

- I – 2 Lux
- II – 10 Lux
- III – 30 Lux
- IV – 50 Lux
- V – Disabled

## Technical Data

Operating voltage	120~277Vac 60Hz
Switched power (capacitive load)	400W@120Vac; 800W@240Vac ; 1000W@277Vac
Standby power	0.5W
Detection area	10/25/50/75/100%, can be customized
Hold time	5s/30s/1min/5min/10min/30min, can be customized
Daylight threshold	2Lux /10Lux /30Lux /50Lux /Disable
Sensor principle	High Frequency (microwave)
Microwave frequency	5.8GHz+/-1.5MHz
Microwave power	<1mW
Detection range	Max. (∅ xH): 18m x 15m
Detection angle	30°~150°
Mounting height	Max. 1.5m
Operating temperature	-20°C ~ +60°C
IP rating	IP20
Certificate	FCC, ETL, in testing for cULus